




MACHINERY

📍 The One World, B Wing, 2nd Floor - 203,
 Ayodhya Chowk, Madhapar, Rajkot - 360 006 (Gujarat)

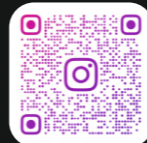
☎ +91 77779 09168 🌐 www.dkmachinerys.com



Scan Me
For Youtube



Scan Me
For whatsapp

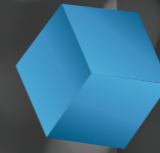


Scan Me
For Instagram

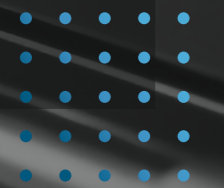
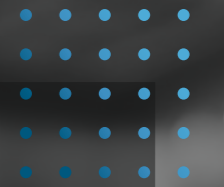
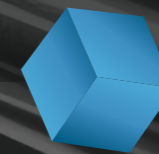
JK Branding



MACHINERY



**FOOD
 MACHINERY
 MANUFACTURING**



About us

At DK Machinery, our mission is to revolutionize the food manufacturing industry by delivering innovative and reliable machinery. We understand the challenges faced by food producers, and our team of experts works tirelessly to develop customized solutions that suit your unique needs. From small-scale startups to large-scale enterprises, we cater to a diverse clientele with unwavering dedication and professionalism.

Our Mission

To revolutionize the food machine manufacturing industry by providing innovative, reliable, and efficient machinery that empowers food producers to deliver high-quality products to consumers worldwide.

Our Vision

Our vision is to be a global leader in the food machine manufacturing industry, recognized for our cutting-edge technology, exceptional customer service, and commitment to sustainability.

Our Goal

We Goal to shape the future of the food machine manufacturing industry, drive positive change, and empower food producers to meet the growing demands of consumers while enhancing food safety and quality.



THE POWER INDUSTRIES
Of Your Kitchen

“
Effortless Chapatis,
Endless Smiles
”



CONTENT INDEX

MODEL	CAPACITY	ARTICLE
DK - 01	5 KG	DOUGH KNEADER MACHINE
DK - 02	10 KG	DOUGH KNEADER MACHINE
DK - 03	20 KG	DOUGH KNEADER MACHINE
DK - 04	30 KG	DOUGH KNEADER MACHINE
DK - 05	1000 TO 3000 AS PR GRM	ELECTRIC BALL CUTTING MACHINE
DK - 06	500 CHAPATI PR/HOUR	CHAPATI PRESSING MACHINE SMALL
DK - 07	1000 CHAPATI PR/HOUR	CHAPATI PRESSING MACHINE CERAMIC MODEL
DK - 08	1000 CHAPATI PR/HOUR	CHAPATI PRESSING MACHINE TEFLON
DK - 09	1000 CHAPATI PR/HOUR	CHAPATI PRESSING MACHINE WITH TAWA
DK - 10	500 CHAPATI PR/HOUR	AUTOMATIC CHAPATI MAKING MACHINE WITH MOISTURE
DK - 11	1000 CHAPATI PR/HOUR	AUTOMATIC CHAPATI MAKING MACHINE WITH MOISTURE LOCKING SYSTEM
DK - 12	2000 CHAPATI PR/HOUR	AUTOMATIC CHAPATI MAKING MACHINE WITH MOISTURE LOCKING SYSTEM
DK - 13	1 HP (150 TO 200 KG)	VEGETABLE CUTTING MACHINE
DK - 14	2 HP (600 TO 700 KG)	VEGETABLE CUTTING MACHINE
DK - 15	250 TO 300 GLASS PR/HR	SUGARCANE JUICER MACHINE (COMPACT)
DK - 16	250 TO 300 GLASS PR/HR	SUGARCANE JUICER MACHINE (PETROL ENGINE)
DK - 17	13 TO 15 KG ONE HOUR	2 IN 1 PULVERISER FOR GRAIN & MASALA
DK - 18	18 TO 20 KG ONE HOUR	2 IN 1 PULVERISER FOR GRAIN & MASALA
DK - 19	35 TO 40 KG ONE HOUR	2 IN 1 PULVERISER FOR GRAIN & MASALA (3 PHASE)
DK - 20	5 KG	POTATO PEELER MACHINE
DK - 21	10 KG	POTATO PEELER MACHINE
DK - 22	15 KG	POTATO PEELER MACHINE

CONTENT INDEX

MODEL	CAPACITY	ARTICLE
DK - 23	720 KG	POTATO PEELER MACHINE
DK - 24	200 KG	POTATO SLICER MACHINE
DK - 25	200 KG	BANANA SLICER MACHINE
DK - 26	7"	NAMKEEN MACHINE
DK - 27	9"	NAMKEEN MACHINE
DK - 28	10.5 "	NAMKEEN MACHINE
DK - 29	12 LTR	ELECTRIC KADAI ROUND
DK - 30	15 LTR	ELECTRIC KADAI ROUND
DK - 31	12 LTR	ELECTRIC KADAI STAND
DK - 32	15 LTR	ELECTRIC KADAI STAND
DK - 33	20 LTR	ELECTRIC KADAI STAND
DK - 34	ELECTRIC KADAI STAND	30 LTR
DK - 35	ELECTRIC BATCH FRYER	30 LTR
DK - 36	ELECTRIC BATCH FRYER	50 LTR
DK - 37	ELECTRIC BATCH FRYER	75 LTR
DK - 38	ELECTRIC BATCH FRYER	100 LTR
DK - 39	ELECTRIC BATCH FRYER	150 LTR
DK - 40	OIL DRYER MACHINE	12 TO 15 KG ONE HOUR
DK - 41	OIL DRYER MACHINE	25 TO 30 KG ONE HOUR
DK - 42	MASALA NAMKEEN MIXER MACHINE	1.5 FEET
DK - 43	MASALA NAMKEEN MIXER MACHINE	2 FEET
DK - 44	MASALA NAMKEEN MIXER MACHINE	3 FEET
DK - 45	MASALA NAMKEEN MIXER MACHINE	5 FEET
DK - 46	BESAN LADDU MACHINE	1200 TO 1500 PIC

Dough Kneader Machine



Model No. : DK-01	Model No. : DK-02
Model : 5 Kg.	Model : 10 Kg.
Motor : 0.5 HP	Motor : 1 HP
Time : 5 to 7 Min	Time : 10 to 12 Min
Weight : 55 kg.	Weight : 105 kg.
Size : 29 x 15.5 x 23 Inch (LxWxH)	Size : 37 x 19 x 37 Inch (LxWxH)
Price : 15,500	Price : 26,000
Model No. : DK-03	Model No. : DK-04
Model : 20 Kg.	Model : 30 Kg.
Motor : 1.5 HP	Motor : 1.5 HP
Time : 12 to 15 Min	Time : 12 to 15 Min
Weight : 132 kg.	Weight : 170 kg.
Size : 44 x 25 x 41 Inch (LxWxH)	Size : 50 x 28 x 44 Inch (LxWxH)
Price : 35,000	Price : 38,000



Electric Dough Ball Cutting Machine



Model No. : DK - 05 | 1000 - 3000 Roti / Hour

Power Supply	: 230 - V (Single Phase)
Electric Connection Load	: 0.5 HP / 3 - 4 Amp.
Size Adjustable	: 15 gm - 100 gm
Electric Parts	: Standard Make
Motor	: Crompton / V.Gaurd / Any Standard Make
Gear Box	: Standard Make
Body	: S.S.202 (1.5 mm)
Weight	: 50 Kg.
Size	: 26 x 15 x 25 Inch (LxWxH)
Price	: 49,560



Chapati Pressing Machine Small

Model No. : DK - 06 | 500 Roti / Hour



Production Capacity	: 500 Roti / Hour
Power Supply	: 220 - 230V (Single phase)
Thickness Adjustable	: 1 mm - 4 mm
Coating plate	: Teflon
Size Adjustable	: 2 inch - 7.5 inch
Electric Connection Load	: 1.5 HP
Size	: 16 in x 15 in x 18 in (L x W x H)
Weight	: 30 kg
Price	: 47,000

Chapati Pressing Machine Ceramic With Moisture Locking System

Model No. : DK - 07 | 800 - 1000 Roti / Hour



Power Supply	: 220 - 230 V (Single Phase)
Electric Connection Load	: 04 HP / 16 Amp.
Thickness Adjustable	: 1.2 mm - 5 mm
Size Adjustable	: 2 - 8 Inch
Motor	: Crompton / Any Standard Make
Gear Box	: Standard Make
Heater	: Pipe Heater (1500 + 1500 W)
Body	: S.S. (1.5 mm)
Coating Plate	: Ceramic
Weight	: 91 Kg.
Size	: 32 x 16 x 18 Inch (LxWxH)
Price	: 65,000



Chapati Pressing Machine Teflon

Model No. : DK - 08 | 800 - 1000 Roti / Hour



Power Supply	: 230 - V (Single Phase)
Electric Connection Load	: 04 HP / 16 Amp.
Thickness Adjustable	: 1.2 mm - 5 mm
Size Adjustable	: 2 - 10 Inch
Coating Plate	: Teflon
Motor	: Crompton / Any Standard Make
Gear Box	: Standard Make
Body	: S.S.202 (1.5 mm)
Weight	: 95 Kg.
Size	: 26 x 24 x 26 Inch (LxWxH)
Price	: 75,000



Chapati Pressing Machine with Tawa

Model No. : DK - 09 | 800 - 1000 Roti / Hour



Power Supply	: 230 - V (Single Phase)
Electric Connection Load	: 4 HP / 16 Amp.
Electric Consumption	: 4 - 5 Unit / Hour
Gas Connection	: LPG / PNG
Gas Pressure	: 15 PSI
Gas Consumption	: 2.5 Kg / Hour
Thickness Adjustable	: 1.2 mm - 5 mm
Size Adjustable	: 2 - 8 Inch
Roti Baking	: Plate with Puffer
Coating Plate	: Ceramic
Motor	: Godrej / Any Standard Make
Gear Box	: NMRV
Drive	: Standard Make
Bearing	: SKF / Standard Make
Electric Parts	: Standard Make
Body	: S.S.202 / 304 (1.5 mm)
Weight	: 125 Kg.
Size	: 24 x 17 x 50 Inch (LxWxH) With Stand Tawa as per Required
Price	: 99,000



Automatic Chapati Making Machine With Moisture Locking System

Model No. : DK - 10 | 500 Roti / Hour



Production Capacity	: 500 Roti / Hour
Power Supply	: : 220 - 230V (Single phase)
Coating plate	: Teflon
Gas Connection	: LPG
Gas Consumption	: 1.5 to 2 KG / Hour
Roti Baking	: Three Layer Technology
Size Adjustable	: 2 inch - 7 inch
Bearing	: (UCP-205)
Motor	: 2 Nos with Gear box
Electric Connection Load	: 2 HP
Contact Parts	: S.S.304 (2.5 MM Thickness)
Body Cover	: S.S.202 (1.2 mm Thickness)
Size	: 51 in x 22 in x 46 in (L x W x H)
Weight	: 210 kg
Price	: 1,60,000



Automatic Chapati Making Machine With Moisture Locking System

Model No. : DK - 11 | 800 - 1000 Roti / Hour



Power Supply	: 220 - 230 V (Single Phase)
Electric Connection Load	: 04 HP / 16 Amp.
Electric Consumption	: 4-5 Unit / Hour
Gas Connection	: LPG / PNG
Gas Pressure	: 15 PSI
Gas Consumption	: 2 - 3 Kg
Thickness Adjustable	: 1 mm - 4 mm
Size Adjustable	: 2 - 8.5 Inch
Roti Baking	: 3 Layer Technology
Coating Plate	: Ceramic
Motor	: Crompton / Any Standard Make
Gear Box	: NMRV
Bearing	: (UPC - 206)
Electric Parts	: Any Standard Make
Contact Parts	: S.S.304 (2.5 mm)
Body	: S.S.
Weight	: 370 Kg.
Size	: 72 x 24 x 54 Inch (LxWxH)
Price	: 2,30,000



Automatic Chapati Making Machine With Moisture Locking System

Model No. : DK - 12 | 2000 Roti / Hour



Power Supply	: 415 - V (Three Phase)
Electric Connection Load	: 7.5 HP / 12 Amp.
Electric Consumption	: 7.5 Unit / Hour
Gas Connection	: LPG / PNG
Gas Pressure	: 15 - 30 PSI
Gas Consumption	: 4 - 5 Kg / Hour
Thickness Adjustable	: 1.2 mm - 4 mm
Size Adjustable	: 2 - 8 Inch
Roti Baking	: 3 Layer Technology
Coating Plate	: Ceramic
Motor	: LHP / Any Standard Make
Gear Box	: Helical & NMRV
Drive	: Standard Make
Bearing	: SKF / Standard Make
Electric Parts	: Standard Make
Contact Parts	: S.S.304 (2.5 mm)
Body	: S.S.304 (1.5 mm)
Weight	: 650 Kg.
Size	: 72 x 36 x 53 Inch (LxWxH)
Price	: 4,99,000



Vegetable Cutting Machine 1 HP



Model No.	: DK - 13
Motor	: 1 HP
Capacity	: 150 - 200 Kg Hour
Size	: 20 x 10 x 20 Inch (LxWxH)
Weight	: 36 Kg
Cutting Blade	: 8 Nos.
Slice	: 2 mm, 3 mm, 10 mm, & 15 mm
Square	: 10x10mm & 15x15 mm
Chinese	: 6 mm & 4 mm
Price	: 21,000



Model No.	: DK - 14
Motor	: 2 HP
Capacity	: 600 - 700 Kg Hour
Size	: 28 x 15 x 26 Inch (LxWxH)
Weight	: 70.400 Kg
Cutting Blade	: 7 Nos.
Slice	: 2 mm, 10 mm, 20 mm
Square	: 10x10mm & 30x30 mm
Chinese	: 6 mm & 2 mm
Price	: 53,000



Sugarcane Juicer Machine



Model No. : DK - 15
Model : Compact
Motor : 0.5 HP
Capacity : 250 - 300 Glass Hour
Size : 12 x 19.5 x 16 Inch (LxWxH)
Weight : 50 Kg
Roll : SS 304 Diamond Roll
Price : 35,000



Model No. : DK - 16
Model : Petrol Engine
Engine : Honda GX-9
Capacity : 250 Glass Hour
Size : 21 x 18 x 34 Inch (LxWxH)
Weight : 65 Kg
Roll : SS 304 Diamond Roll
Fuel Con : 1 Ltr Per Hour
Price : 45,000



2 In 1 Pulveriser For Grain & Masala



Model No. : DK - 17
Motor : 2 HP
Capacity : 13 - 15 Kg Hour
Size : 23 x 14 x 34 Inch
Weight : 50 Kg
Chamber Size : 10 x 4 Inch
RPM : 2880
Jali : 5
Price : 18,000

Model No. : DK - 18
Motor : 3 HP
Capacity : 18 - 20 Kg Hour
Size : 23 x 15 x 41 Inch
Weight : 62 Kg
Chamber Size : 10 x 5 Inch
RPM : 2880
Jali : 5
Price : 24,000

Model No. : DK - 19
Motor : 5 HP
Capacity : 35 - 40 Kg Hour
Size : 28 x 20 x 48 Inch
Weight : 109 Kg
Chamber Size : 11 x 6 Inch
RPM : 2880
Jali : 5
Price : 42,000



Potato Peeler Machine



Model No. : DK - 20
Motor : 0.5 HP
Capacity : 5 Kg
Size : 28 x 14 x 20 Inch
Weight : 33.600 Kg
Time : 2 Min
Drum Size : 14 x 13
Price : 15,000

Model No. : DK - 21
Motor : 0.5 HP
Capacity : 10 Kg
Size : 27 x 16 x 32 Inch
Weight : 50 Kg
Time : 2 Min
Drum Size : 14 x 13
Price : 20,000

Model No. : DK - 22
Motor : 1 HP
Capacity : 15 Kg
Size : 30 x 18 x 34 Inch
Weight : 55 Kg
Time : 3 Min
Drum Size : 15.5 x 15
Price : 26,000

Model No. : DK - 23
Motor : 1.5 HP
Capacity : 20 Kg
Size : 30 x 18 x 38 Inch
Weight : 60 Kg
Time : 3 Min
Drum Size : 15.5 x 18
Price : 30,000

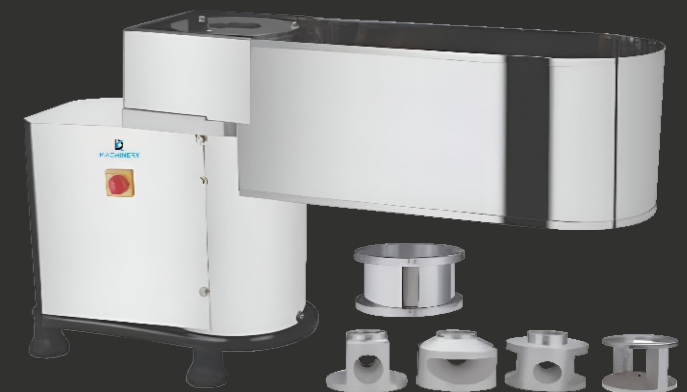


Potato Slicer Machine Banana Slicer Machine



Model No. : DK - 24
Motor : 0.5 HP
Capacity : 200 - 500 Kg Hour
Size : 21 x 14 x 28.5 Inch
Weight : 42 Kg
Cutting Blade : 3 (Plain, Lining, Stick)
Price : 35,400

Model No. : DK - 25
Motor : 1 HP
Capacity : 200 - 250 Kg Hour
Size : 43 x 12 x 21 Inch
Weight : 62.500 Kg
Time : 3 (Plain, Lining, Stick)
Drum Size : 3 (Round, oval, Long patta)
Price : 53,000



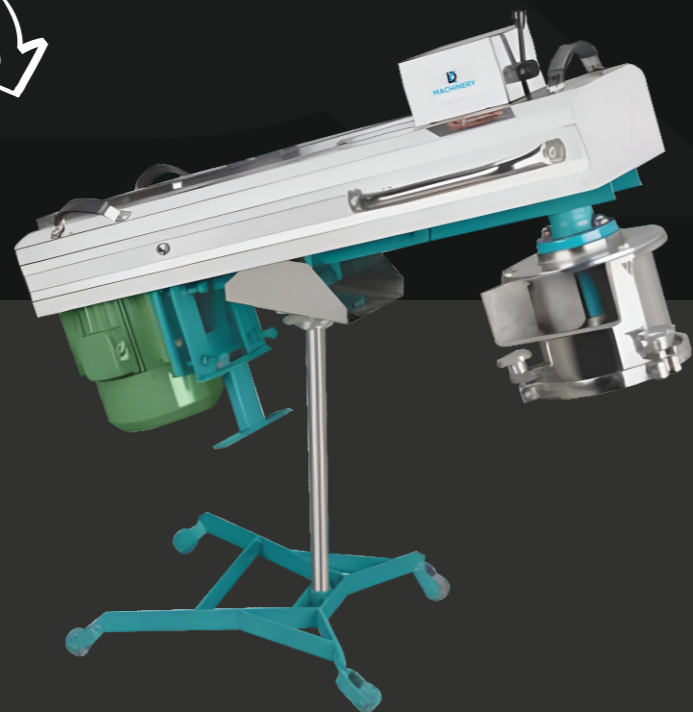
Namkeen Machine



Model No. : DK - 26
Model : 7 Inch
Motor : 0.5 HP
Weight : 56.500 Kg
Size : 49 x 12 x 37 Inch
Type : Belt & Chain
Jali : 10 Pcs
Price : 23,000

Model No. : DK - 27
Model : 9 Inch
Motor : 1 HP
Weight : 79.300 Kg
Size : 46 x 13 x 41 Inch
Type : Belt & Chain
Jali : 10 Pcs
Price : 25,000

Model No. : DK - 28
Model : 10.5 Inch
Motor : - HP
Weight : - Kg
Size : - x - x - Inch
Type : -
Jali : - Pcs
Price : 48,000



Electric Kadai Round



Model No. : DK - 29
Model : 12 Ltr.
Double Heater : 3000 + 3000 W
Kadai Size : 18 Inch
Size : 18 x 20 x 19 Inch
Weight : 8 Kg
Price : 15,000

Model No. : DK - 30
Model : 15 Ltr.
Double Heater : 3000 + 3000 W
Kadai Size : 20 Inch
Size : 20 x 22 x 19
Weight : 10.300 Kg
Price : 18,000



Electric Kadai Stand



Model No. : DK - 31
Model : 12 Ltr.
Double Heater : 3000 + 3000 W
Kadai Size : 18 Inch
Size : 23 x 23 x 32 Inch
Weight : 18 Kg
Price : 24,000

Model No. : DK - 32
Model : 15 Ltr.
Double Heater : 3000 + 3000 W
Kadai Size : 20 Inch
Size : 25 x 25 x 32 Inch
Weight : 22 Kg
Price : 27,000

Model No. : DK - 33
Model : 20 Ltr.
Double Heater : 3000 + 3000 W
Kadai Size : 22 Inch
Size : 27 x 27 x 32
Weight : 26 Kg
Price : 35,000

Model No. : DK - 34
Model : 30 Ltr.
Double Heater : 3000 + 4000 W
Kadai Size : 26 Inch
Size : 32 x 32 x 32
Weight : 34 Kg
Price : 45,000



Electric Batch Fryer



Model No. : DK - 35
Model : 30 Ltr.
Power Supply : 3 Phase
Load : 6 Kw
Size : 31 x 21 x 34 Inch
Temp : 50° - 300°
Price : 49,000

Model No. : DK - 36
Model : 50 Ltr.
Power Supply : 3 Phase
Load : 12 Kw
Size : 36 x 26 x 34 Inch
Temp : 50° - 300°
Price : 71,000

Model No. : DK - 37
Model : 75 Ltr.
Power Supply : 3 Phase
Load : 18 Kw
Size : 40 x 30 x 34 Inch
Temp : 50° - 300°
Price : 99,000



Electric Batch Fryer



Model No. : DK - 38
Model : 100 Ltr.
Power Supply : 3 Phase
Load : 24 Kw
Size : 46 x 30 x 34 Inch
Temp : 50° - 300°
Price : 1,20,000

Model No. : DK - 39
Model : 150 Ltr.
Power Supply : 3 Phase
Load : 30 Kw
Size : 51 x 36 x 34 Inch
Temp : 50° - 300°
Price : 1,75,000



Oil Dryer Machine



Model No. : DK - 40
Model : 12 - 15 Kg
Motor : 1 HP
Weight : 75 Kg
Size : 32 x 25 x 35
Basket Size : 12 x 14
RPM : 800
Price : 30,000

Model No. : DK - 41
Model : 25 - 30 Kg
Motor : 1.5 HP
Weight : 91.4 Kg
Size : 36 x 28 x 38
Basket Size : 17 x 15
RPM : 800
Price : 47,200



Masala Namkeen Mixer Machine



Model No. : DK - 42
Model : 1.5 Feet
Motor : 0.5 HP
Drum Size : 18 x 10 - Depth 12
Size : 36 x 17 x 29
Weight : 53.450 Kg
RPM : 24
Price : 30,000

Model No. : DK - 43
Model : 2 Feet
Motor : 0.5 HP
Drum Size : 24 x 12 - Depth 14
Size : 41 x 19 x 32
Weight : 57.800 Kg
RPM : 24
Price : 42,000

Model No. : DK - 44
Model : 3 Feet
Motor : 1.5 HP
Drum Size : 36 x 20 - Depth 21
Size : 61 x 28 x 45
Weight : 153 Kg
RPM : 32
Price : 75,000

Model No. : DK - 45
Model : 5 Feet
Motor : 2 HP (3 Phase)
Drum Size : 60 x 20 - Depth 21
Size : 85 x 28 x 45
Weight : 182 Kg
RPM : 32
Price : 99,000



Besan Laddu Machine



Model No. : DK - 46
Motor : 1.5 HP
Capacity : 1200-1500 pcs. per hour
Weight : 157 Kg
Size : 58"x26"x42"
Laddu Size : 40-45 gm
Price : 1,99,000



